

16mm Single Shaft, Multi-Ganged Series

Application

- ✓ Audio, Home appliance, Industrial, etc.

Feature

- ✓ Steady structure with optional metal shaft.



■ Specification

Total Rotational Angle	270 ± 5°
Maximum Operating Voltage	150V AC
Insulation Resistance	100MΩ Min. at 500V DC
Dielectric Strength	500V AC, 1 minute
Rotational Torque	20 ~ 200 gf.cm
Rotational Stop Strength of the Shaft	6 kgf.cm
Rotational Life	15,000 cycles

■ How to order

RD1601SF – 40 B4 – 20F – B50K

[Model](#)

Bushing Type

Code	Dimensions	
B4	∅7mm	8mm
F1	∅10mm	5mm
F4	∅10mm	8mm

[Shaft](#)

Taper and Resistance Value

Code	Taper	Resistance Value
A100K	Log/A	100KΩ
B1M	Linear/B	1MΩ

Taper: A, B


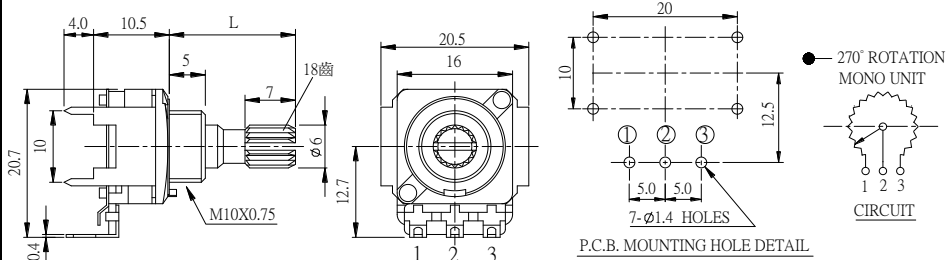

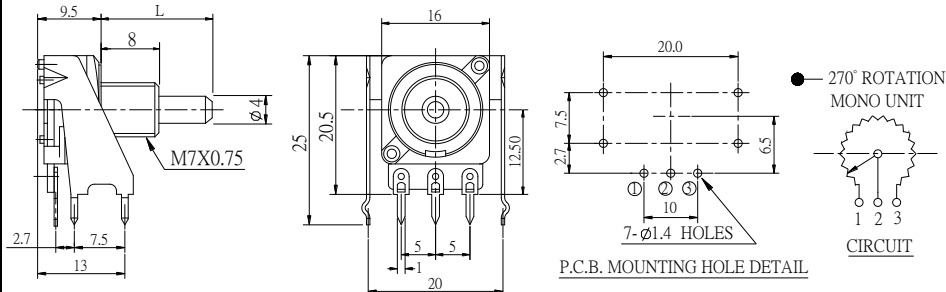
Resistance Value: 1KΩ to 500KΩ and 1MΩ

*Contact us for other requirements.

16mm Single Shaft, Multi-Ganged Series


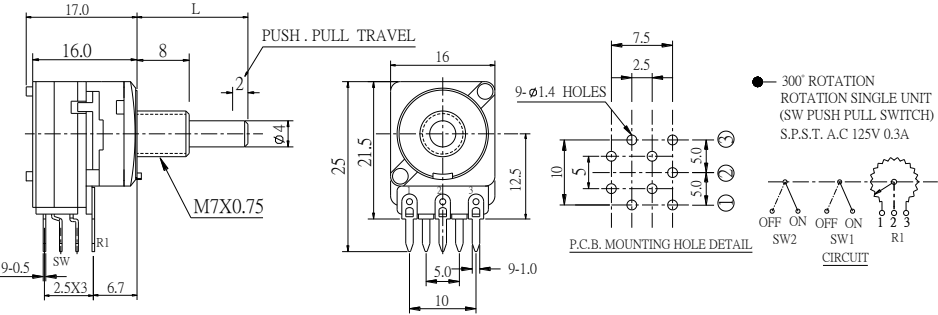
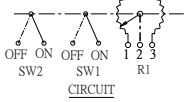

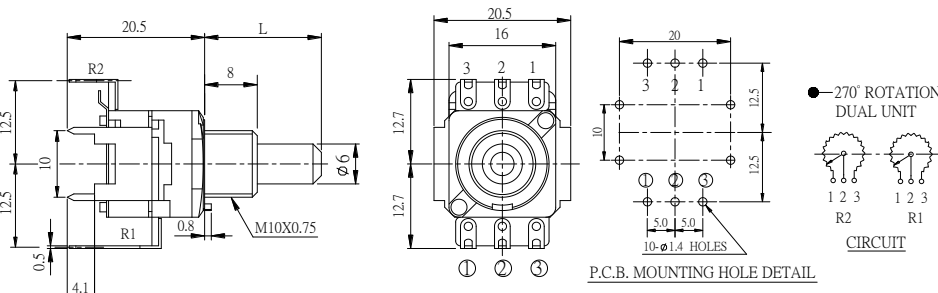
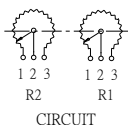
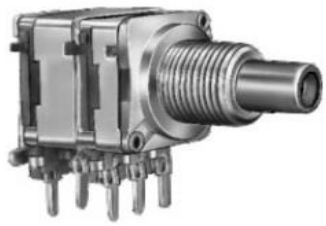
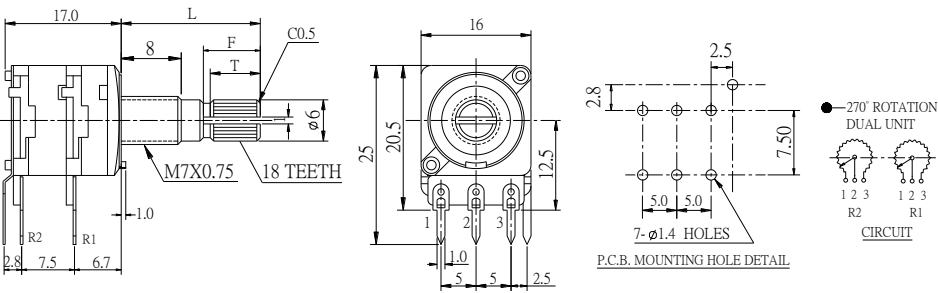
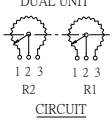

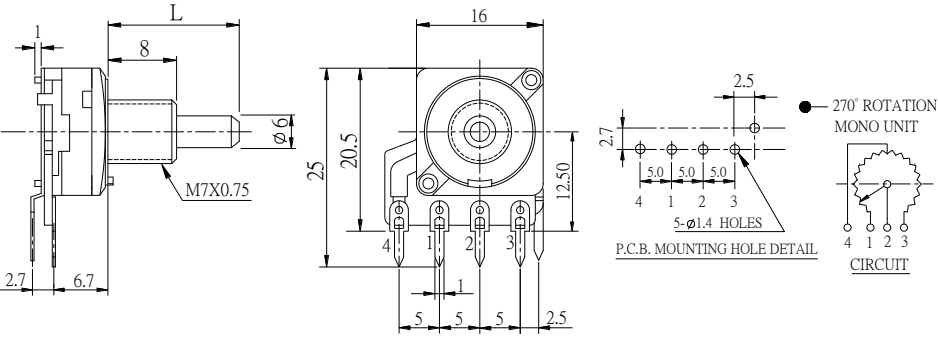
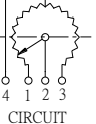
Model Description

Model	Number of Unit	Push-Pull Switch	Terminal Type	With Sleeve or Bushing
RD1601F-40	Single Unit	N/A	Vertical	Metal bushing
RD1601F-20	Single Unit	N/A	Horizontal	Metal bushing
RD1601SF-20	Single Unit	D.P.D.T.	Horizontal	Metal bushing
RD1602F-40	Dual Unit	N/A	Vertical	Metal bushing
RD1602F-20	Dual Unit	N/A	Horizontal	Metal bushing
RD1601LF-20	Single Unit	N/A	Horizontal	Metal bushing

Order Code	Outline Drawing
<p>RD1601F-40</p> 	
<p>RD1601F-20</p> 	

[Back to top](#)

16mm Single Shaft, Multi-Ganged Series

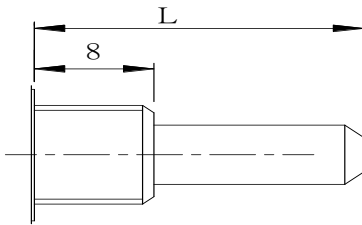
Order Code	Outline Drawing
<p>RD1601SF-20</p> 	 <p>● 300° ROTATION SINGLE UNIT (SW PUSH PULL SWITCH) S.P.S.T. A.C 125V 0.3A</p> 
<p>RD1602F-40</p> 	 <p>● 270° ROTATION DUAL UNIT</p> 
<p>RD1602F-20</p> 	 <p>● 270° ROTATION DUAL UNIT</p> 
<p>RD1601LF-20</p> 	 <p>● 270° ROTATION MONO UNIT</p> 

[Back to top](#)

16mm Single Shaft, Multi-Ganged Series

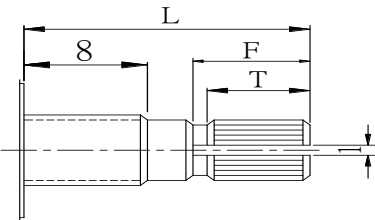
■ Shaft and Bushing Dimensions

R Type



L	20	25	30	35
---	----	----	----	----

K Type



L	20	25	30
F	7	10	12
T	6	8	10

Design and specifications presented here are for the standard parts only. Please kindly contact us for your special requests and ask for the current technical specifications before purchase and/or use.

[Back to top](#)